



# AR TRIGGER INSTALLATION INSTRUCTIONS

**AR 15 & AR 10 COMPETITION, IMPACT, TARGA 2 STAGE, CALVIN ELITE, & AR PRO**

If you have a polymer lower receiver, please contact [technicalsupport@timneyusa.com](mailto:technicalsupport@timneyusa.com) and we will send you a metal plate to install under your trigger to avoid damage.

Thank you for purchasing this Timney Trigger. It has been designed and manufactured to provide you with a lifetime of dependable service. Each trigger is hand tested and calibrated on a rifle action before leaving our factory. Please read these instructions fully before you begin installing the trigger, you will be glad you did.

## TOOLS NEEDED



Straight Punch



5/64" Hex key



or



Flat head or hex key to remove pistol grip

## TIMNEY TRIGGER GUARANTEE

**Material and workmanship:** This Timney trigger has been carefully inspected, tested and adjusted to give a lifetime of dependable service. Every possible care has been exercised in its design and construction. If any defect in workmanship or material should develop under conditions of normal use and service, any necessary repairs, including parts and labor will be made at NO CHARGE to the purchaser providing that our inspection reveals parts were not damaged through accident, alteration, misuse, abuse or other causes beyond our control. We neither assume nor imply any oral or statutory warranties, and we neither assume nor authorize any person to assume for us any obligation or liability in connection with this trigger. Repairs or disassembly of this trigger in any manner without specific authorization, voids the guarantee.

**IF YOU HAVE TROUBLE CHECK OUT TROUBLESHOOTING STEPS ON  
[WWW.TIMNEYTRIGGERS.COM](http://WWW.TIMNEYTRIGGERS.COM) OR CONTACT US**

Need help with your install? Contact our customer service team via phone or email for assistance.  
Phone: 623-223-1111 Fax: 623-223-1112 Support: [technicalsupport@timneyusa.com](mailto:technicalsupport@timneyusa.com)

# INSTALLATION INSTRUCTIONS

- 1** Before beginning work on any firearm make sure to remove the ammunition source and double check to ensure the chamber is empty.
- 2** To separate the upper and lower receiver, press out the two takedown pins.
- 3** From the bottom there should be a large screw visible inside the pistol grip, either a hex key or flathead screw. In order to remove the pistol grip, take out this screw. **Be careful not to lose the safety spring and detent!**
- 4** Use your straight punch to push out the pins that are holding your stock trigger assembly in place.
- 5** Remove safety selector.
- 6** Now you're ready to insert your new Timney AR trigger in the lower receiver! Drop in the trigger, reinstall the safety selector and then insert trigger pins.
- 7** **Tighten the pre-installed setscrews in the trigger housing located under each hammer spring leg.**
- 8** Reinstall the safety detent, safety spring and pistol grip.
- 9** Reinstall the upper receiver on the lower receiver.
- 10** Perform a function check and enjoy your new Timney Trigger.



Separate receivers



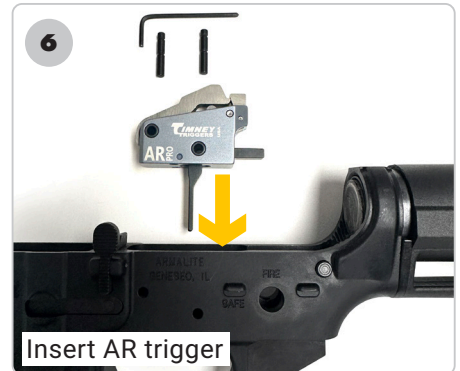
4a



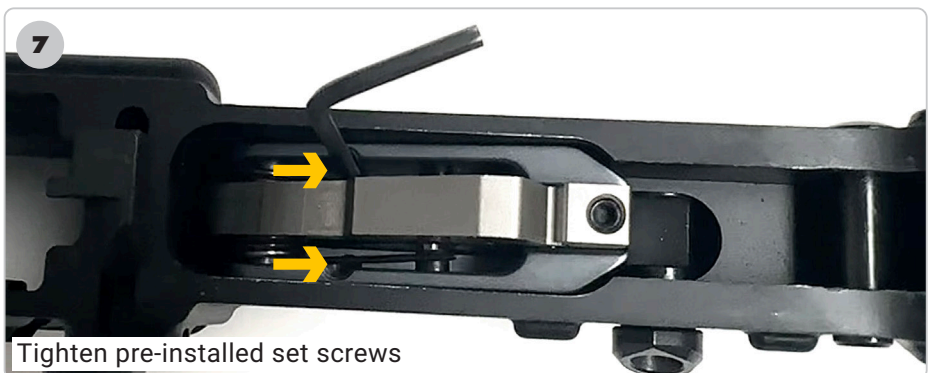
Remove stock trigger



Remove safety



Insert AR trigger



Tighten pre-installed set screws

**IF YOU HAVE TROUBLE CHECK OUT TROUBLESHOOTING STEPS ON [WWW.TIMNEYTRIGGERS.COM](http://WWW.TIMNEYTRIGGERS.COM) OR CONTACT US**

Need help with your install? Contact our customer service team via phone or email for assistance.

Phone: 623-223-1111 Fax: 623-223-1112 Support: [technicalsupport@timneyusa.com](mailto:technicalsupport@timneyusa.com)

